

## Acoustex Stingray Panel - Data Sheet



# STINGRAY, PET felt acoustic panels, faced with real embossed semi aniline dyed leather.



## Technical Data Sheet

Acoustex is a black Textel PET felt acoustic absorber with routed surface with real embossed semi aniline dyed leather finish. This exclusively soft embossed flattened stingray look finished leather brings a touch of the real exotic to any project. This leather is finished on Patagonia Soft aniline hides.

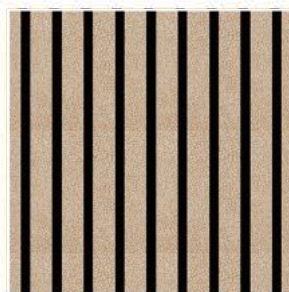
FEATURES	BENEFITS
PET backing panel	Sound absorber
Routed finish	Precise cut
Pavoni Leather	Match existing colourway
Two standard thicknesses	Surface appearance
	Choice of acoustic performance

## PHYSICAL PROPERTIES

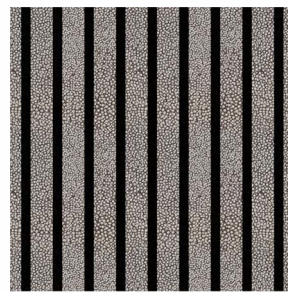
Parameter		Value	
PET colour		Black	Black
Thickness		14 mm	26 mm
Length		1700 mm	1700 mm
Width		400 mm	400 mm
Sheet weight	Stingray	3 kg	3.4 kg
Recycled equivalent		33 (33cl bottle)	49 (33cl bottle)



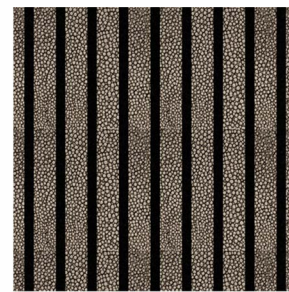
Stingray acoustic veneer available in 6 colours for both 14mm & 26mm thickness options:



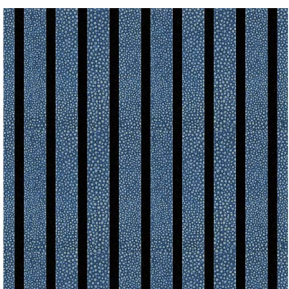
Beige



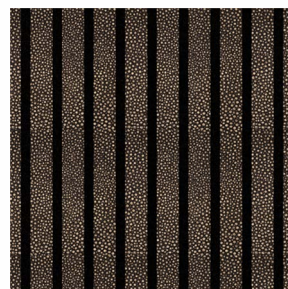
Mouse



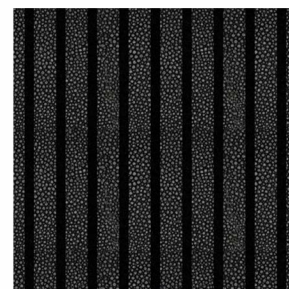
Tortora



Navy

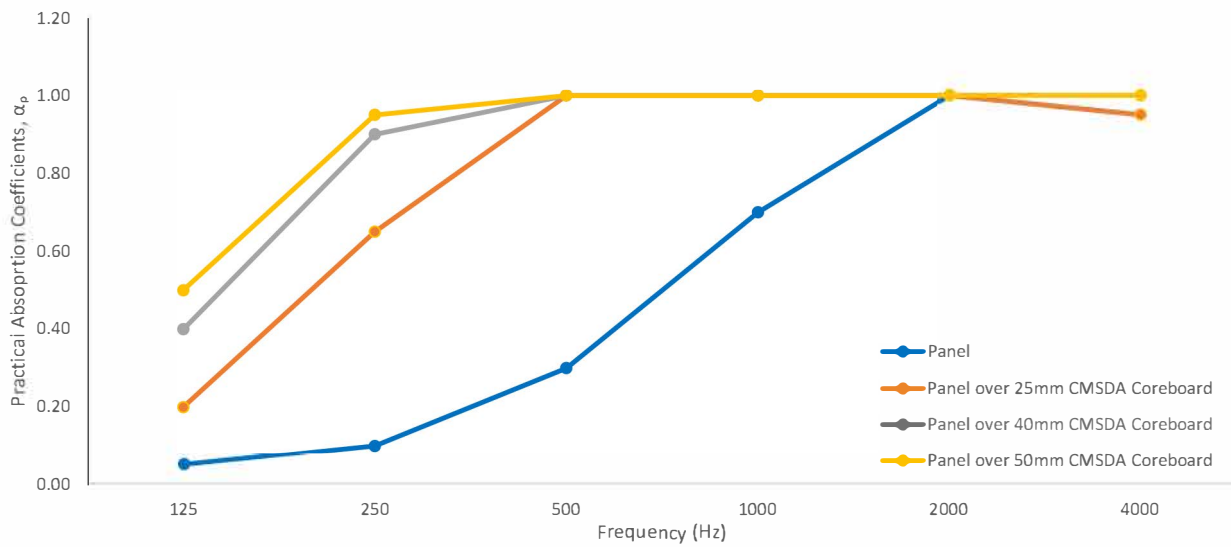


Moro



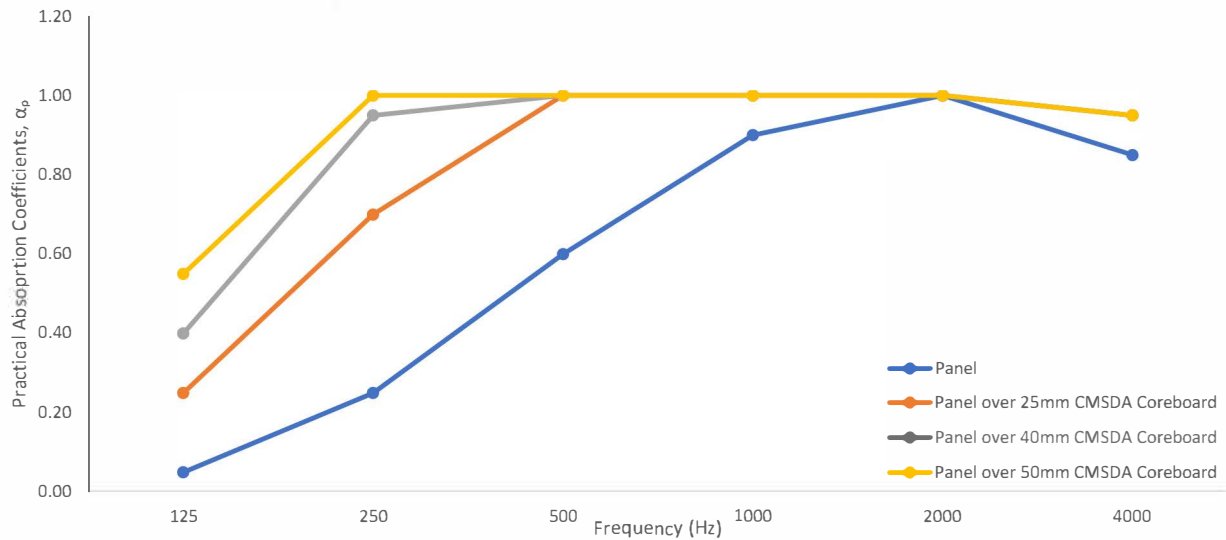
Nero

### Acoustex STINGRAY Panel - 14mm overall thickness

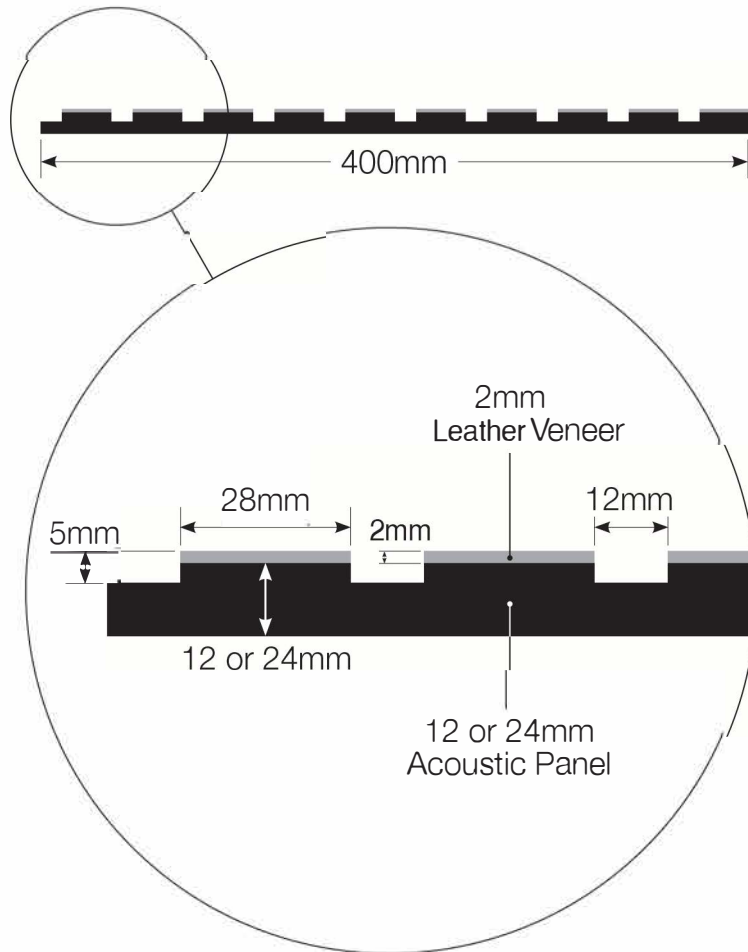


ISO 354:2003	Frequency (Hz)						NRC	Absorp Coeff, aw	Class
	125	250	500	1K	2K	4K			
Panel	0.05	0.10	0.30	0.70	1.00	0.95	0.50	0.35	D
Panel over 25mm CMSDA Coreboard	0.20	0.65	1.00	1.00	1.00	0.95	0.95	0.95	A
Panel over 40mm CMSDA Coreboard	0.40	0.90	1.00	1.00	1.00	1.00	1.00	1.00	A
Panel over 50mm CMSDA Coreboard	0.50	0.95	1.00	1.00	1.00	1.00	1.05	1.00	A

### Acoustex STINGRAY Panel - 26mm overall thickness



ISO 354:2003	Frequency (Hz)						NRC	Absorp Coeff, aw	Class
	125	250	500	1K	2K	4K			
Panel	0.05	0.25	0.60	0.90	1.00	0.85	0.70	0.55	D
Panel over 25mm CMSDA Coreboard	0.25	0.70	1.00	1.00	1.00	0.95	0.95	1.00	A
Panel over 40mm CMSDA Coreboard	0.40	0.95	1.00	1.00	1.00	0.95	1.10	1.00	A
Panel over 50mm CMSDA Coreboard	0.55	1.00	1.00	1.00	1.00	0.95	1.10	1.00	A



Texfel®

 **acoustex**

 earthanatomy

**MWC  
Group**

T 01793 208030  
E sales@earthanatomy.co.uk

IMPORTANT The information provided within this document is believed correct and to the best of our available knowledge at its revision date and is provided as suggestion for safe handling, storage, transportation, use and disposal. The information should not be considered obligation in respect of warranty of (technical performance, quality (specification) or suitability for any application or design. The customer must satisfy themselves the product (or draft specification) are relevant and suitable for their need and design intent. Prospective users should test a sample of product under their own conditions to satisfy themselves of its suitability for intended purpose and that expert advice be sought where different applications are contemplated. Due to our policy of continuous improvement we reserve the right to alter or amend published specification or design without prior notice. Reproduction of any part of this publication in any manner is not permitted without our prior written consent.